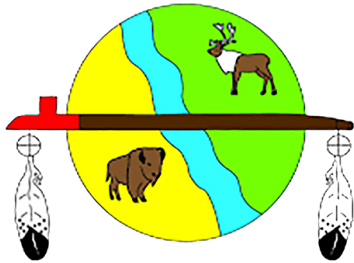




Thebacha



Thebacha Leadership Council



Thebacha Leadership Council



SIGNATORIES OF THE MEMORANDUM OF AGREEMENT

Signed at FORT SMITH, this 21 day of JUNE, 2024.

Fort Smith Métis Council
[Signature]
President Allan Heron

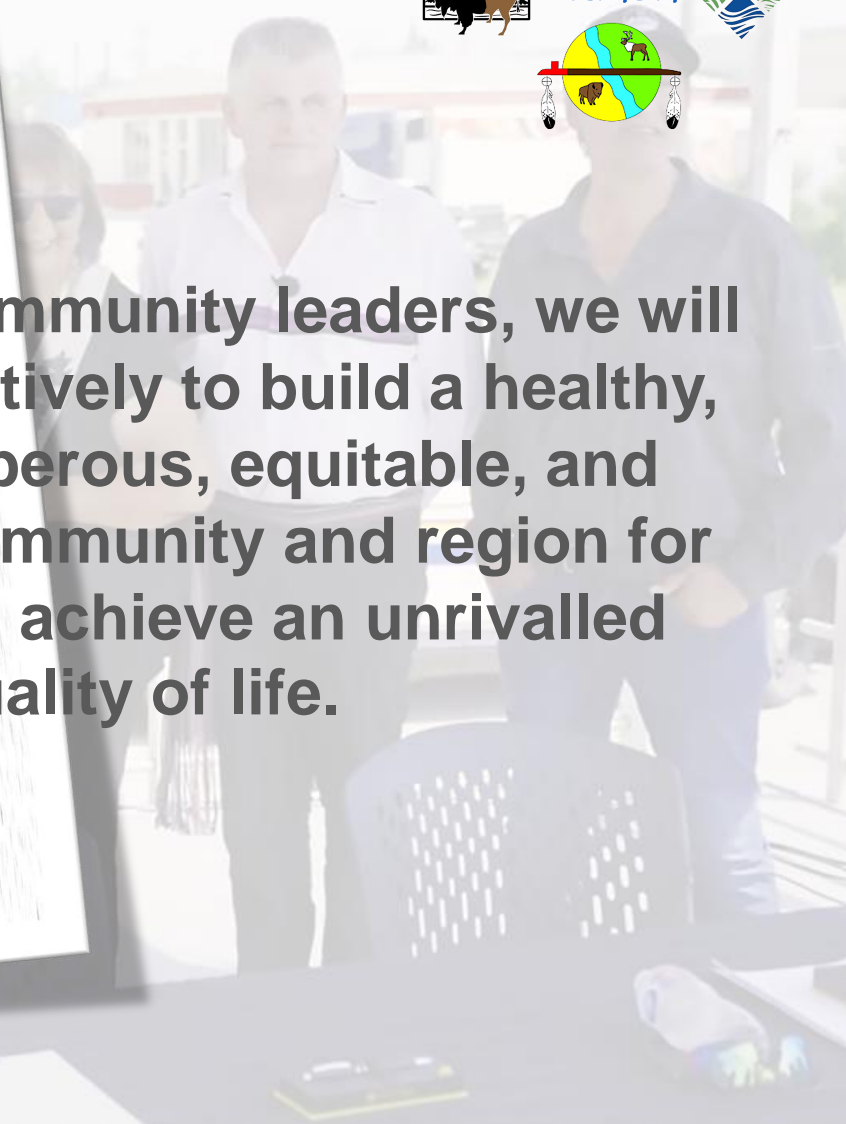
Salt River First Nation
[Signature]
Chief Toni Heron

Smith's Landing First Nation
[Signature]
Chief Thaidene Paulette

Town of Fort Smith
[Signature]
Mayor Fred Daniels

Member of the Legislative Assembly for Thebacha
[Signature]
MLA Jay MacDonald

Together, as community leaders, we will work collaboratively to build a healthy, strong, prosperous, equitable, and sustainable community and region for all citizens to achieve an unrivalled quality of life.



Thebācha Leadership Council



How did we get here ?

- **Collaborative Leadership Initiative**

The Collaborative Leadership Initiative (CLI) is a facilitated process that provides Indigenous and municipal elected leaders with support, resources, and expertise to find solutions to shared challenges, address common concerns, and develop a shared path forward.

A project of the **Centre for Indigenous Environmental Resources (CIER)**, the CLI builds on successful approaches implemented in the Northwest Territories and Manitoba.



Thebacha Leadership Council



Who & What is CIER?

Canada's first Indigenous directed environmental non-profit charitable organization, founded in 1995 by eight First Nation Chiefs from across Canada.

They determined the need to build capacity in Indigenous communities so they could manage their environmental challenges by creating their own institutions and partner with governments and other organizations.

A culturally diverse and collaborative organization, CIER supports Indigenous people in building sustainable communities and protects lands, waters and all living things.



Thebacha Leadership Council



CIER's Mission & Vision

CIER supports Indigenous people and communities to be leaders of positive environmental change, using the best of Western and Indigenous knowledge to create a world that is in balance and supports the well-being of all living things.

It is guided by the values of: Respect, Integrity, Innovation and Excellence, Balance, Diversity, and Teamwork.

CIER's mission is to work in partnership with Indigenous nations to support building sustainable Indigenous communities and protect lands and waters.

For more information about CIER / CLI visit: **www.yourcier.org**



Thebacha Leadership Council

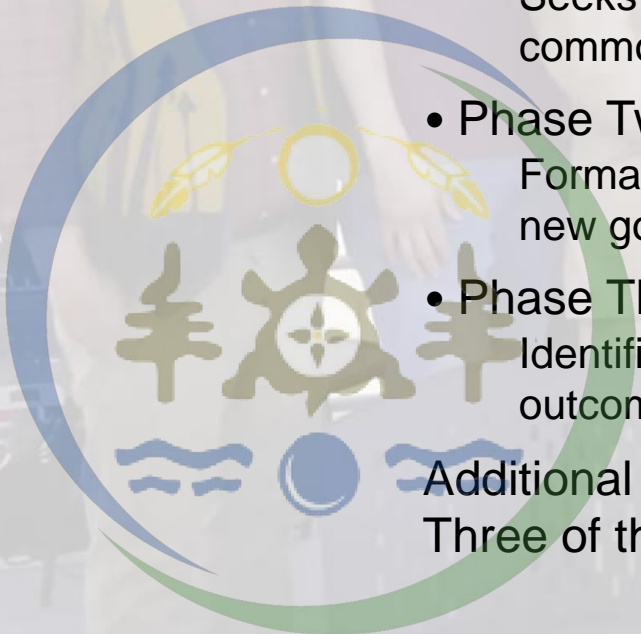


Community Leadership Initiative

The CLI is structured around 3 phases:

- Phase One ~ Building the Foundation for Reconciliation
Seeks to strengthen trust and build relationships and focuses on identifying areas of common concern and opportunities for action through education.
- Phase Two ~ Formalizing a Commitment to Work Together
Formalizing a commitment to work together through a written agreement to establish new governance structures.
- Phase Three ~ Moving from Idea to Action
Identifies strategic pathways to move from planning to action to accomplish a shared outcomes.

Additional ongoing supports for CLI projects are identified and resources in Phase Three of the CLI Process – they vary from location to location



Thebacha Leadership Council



CLI – Phase Approach



Thebacha Leadership Council



CLI – How it works

CLI is a facilitated process providing resources and expertise to support Indigenous and municipal elected leaders as they find solutions to shared water challenges.

CLI leverages a proven process that advances action towards true reconciliation to build trust, strengthen relationships, further ongoing efforts, develop new initiatives.

- **CREATING THE CONDITIONS**

CLI starts by working with elected leaders through a structured process to open the lines of communication, identify shared areas of concern, and prioritize key actions that benefits everyone



Thebacha Leadership Council



CLI – How it works

- **Relationships first**

CLI invests time + resources to develop respectful, productive relationships. Through the process, elected leaders work together to dispel myths, build trust, understanding, and open new pathways and methods to tackle the tough issues.

- **Action-oriented**

CLI process develops new approaches to decision-making, governance, planning. CLI works w participants to tailor a process to ensure ongoing, long-term collaborative action.

- **Long-lasting**

Sustainability is embedded in the CLI model as it is designed to create permanent change in processes, governance models, and operating systems. Focusing on sustainability from the outset ensures that outcomes are relevant and resilient.



Thebacha Leadership Council



CIER – Contact

For more information about CIER / CLI visit: www.yourcier.org

Centre for Indigenous Environmental Resources
P.O. Box 26092 RPO Maryland
Winnipeg, MB R3G 3R3

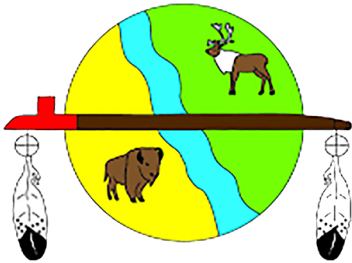
Email: earth@yourcier.org

Phone: 204-956-0660





Thebacha



Thebacha Leadership Council



Thebacha Leadership Council



What is TLC

- ❑ **A coalition of the local elected leadership speaking with one voice on behalf of the community.**
- ❑ **Working together collaboratively on common concerns, issues and initiatives on behalf of the entire community.**
- ❑ **The first Leadership Council group in Canada that has used the CLI process to establish new, operational governance institutions post MOA signing – dedicated coordinator, established leaders table, etc.**

Thebacha Leadership Council



What does TLC do

- Advocates for initiatives and programs that focus on community health and wellness, cultural preservation, nature conservation and sustainable economic prosperity.**
- Coordinates activities and projects that TLC feels will have a beneficial impact to everyone in the community.**
- Organizes actions and lobbying efforts to pursue “course-of-action” on issues of common interest that are affecting our community.**

Thebacha Leadership Council



What has TLC done

- ❑ **Arranged for meetings with Ministers from GNWT**
 - Premier / Minister Justice on Men's Correction closure
 - Delegated to College Board of Governors
 - Meeting with College BoG Chair & President
 - Minister responsible for NTPC & CEO
- ❑ **Oversight of Northern Whooping Crane Festival**
 - Organizing activities for 2025 NWCF with community coordinators
- ❑ **Activities and applications for TLC sustainability**
 - Vision and Strategic Planning session
 - Economic development plan / Regional asset inventory

Thebacha Leadership Council



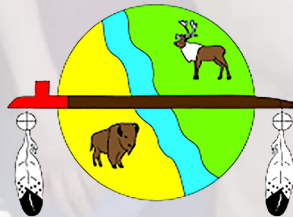
Future TLC initiatives

- ❑ **Sustainable economic growth**
 - Business plan / strategy for College main campus in Fort Smith
 - Economic development plan / Regional asset inventory
 - Strategic outline for dealing with Housing (*affordability + suitability*)
 - Conservation economy initiatives (*tourism, electrification projects*)
- ❑ **Cultural preservation and conservation**
 - Community stewardship model for NLMCC
 - Assist in identifying cultural resources / Action plan for preservation
- ❑ **Community health and wellness**
 - Business case for wellness centre / rehabilitation centre
 - Strategy / Action plan for recruitment of full-time local doctors / nurses

Thebacha Leadership Council



Thebacha



Vision

Together, as community leaders, we will work collaboratively to build a healthy, strong, prosperous, equitable, and sustainable community and region for all citizens to achieve an unrivalled quality of life.

Mission

A unified commitment to achieve positive goals and objectives for the growth and development of our community as a whole.

Thebacha Leadership Council



Guiding Principles

- Integrity
- Open Communications
- Respect
- Collaboration
- Reconciliation

Thebacha Leadership Council



Core Values

- Community Wellbeing and Safety**
- Cultural Preservation and Celebration**
- Environmental Stewardship**
- Sustainable Development**
- Collaborative Decision-making**

Thebacha Leadership Council



TLC – Contact

For more information about TLC visit: www.thebachaleaders.ca

Thebacha Leadership Council
Box 1354
Fort Smith, NT X0E 0P0

Email: info@thebachaleaders.ca

Phone: (867) 872-0243

Energy In Sites

Accelerating Indigenous Community Energy Retrofits

A program by the Centre for Indigenous Environmental Resources

CIER – Program Administrator

- Program outreach
- Community engagement
- Capacity building
- Educational material

The LEAP Group – Technical Partner

- Energy assessments
- Project planning
- Financial analysis
- Funding application support

Energy InSites

Program Overview

Energy InSites is a building retrofit program intended to reduce energy consumption and emissions from existing buildings in Indigenous communities.

Energy InSites is a **Deep Retrofit Accelerator Initiative** program.

Deep Retrofit:

- Multi-faceted building renovation intended to reduce energy consumption by over 50% and GHG emissions by over 70%.
- Considers all building elements: building envelope, HVAC, appliances and equipment, lighting, etc.
- Clean energy generation is within scope.

Eligible Buildings:

- Commercial, Institutional, Industrial, Multi-unit Residential.

Energy InSites Program Objectives

Support Indigenous communities:

1. Understand energy consumption and emissions related to existing buildings.
2. Identify retrofit opportunities to reduce energy consumption and emissions.
3. Secure funding to modernize community buildings via retrofit projects.
4. Support capacity building activities to increase community energy literacy.

The program is fully funded:

- Services provided under this program are delivered at no cost to participating communities.

Eligible Participants:

- First Nations, Inuit and Metis communities in AB, SK, MB and NWT.

Program Timelines:

- Program ends March 31, 2027.

Energy InSites

Services:

- Funding to hire a part time Energy Champion from the community to support the project.
- Support securing funding to modernize community buildings through deep retrofit projects.
- Energy Assessments conducted on the community's commercial, institutional, industrial and multi-unit residential buildings.
- Participation in various community engagement and capacity building activities.
- Participation in virtual learning circles to network and share knowledge.

Energy InSites

Expectations from partner communities:

- Hire/appoint Energy Champion to support the program (funded by the program).
- Provide CIER and LEAP staff access to community buildings to facilitate energy assessments.
- Share historical energy consumption information to support energy assessments and modeling.



Program objectives:

- Support Indigenous communities to secure funding to modernize community buildings through retrofit projects.
- Support capacity building activities to increase community energy literacy.

Deliverables

- **Funding:** collaboration identifying funding opportunities, drafting and submitting funding applications.
- **Energy assessments:** performed on the community's buildings, energy assessment and retrofit opportunity reports completed to support funding applications.
- **Capacity building:** to increase community understanding of energy consumption and emissions.



Energy InSites – Contact

For more information visit CIER: www.yourcier.org/energy-insites/

Brent Martel - Climate Change Project Manager

bmartel@yourcier.org

(204) 956-0660 ext. 13