

ASSET MANAGEMENT

CREATING YOUR
SUSTAINABILITY STORY



My life as an
ASSET MANAGEMENT
advocate



ASSET MANAGEMENT?

(we have more
important things to
talk about)



MY INTENTION



AN ASSET
MANAGEMENT
MINDSET:

SHIFT THE
NARRATIVE

First, it is an intention.
Then a behaviour.
Then a habit.
Then a practice.
Then a second nature.
Then it is simply who you
are.

Brendon Burchard

**BACK TO
BASICS**

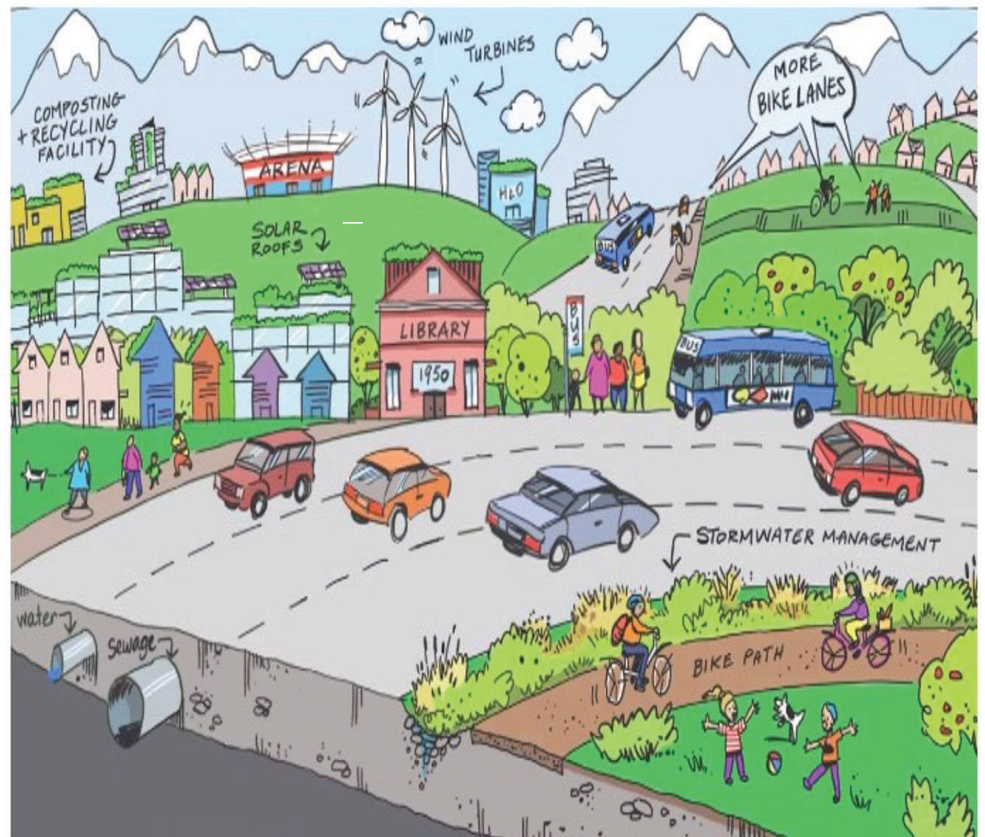
WHY DOES YOUR
ORGANIZATION
EXIST?



Transportation networks including roads,
sidewalks, bike lanes, trails,
Snow clearing, street sweeping, pothole filling
Storm drain management
Clean, clear, safe drinking water
Waste water systems
Community and cultural events
Garbage and recycling services
Land use planning and zoning for the future
Parks and sports fields
Sports facilities
Play places & recreation programs for ALL ages
Bylaw enforcement
Enforcement of building standards

Flood protection
Fire protection
Emergency management
Community safety programs
Public inquiries
FOI requests
Grant writing
Support for seniors – families – businesses etc
Animal services – licensing/dog park/shelter
Signage
Attractive public spaces – flowers/lawn care
Communication and engagement
AND MORE.....

LG exists to
provide safe,
sustainable,
secure services in
a predictable, cost
effective manner.

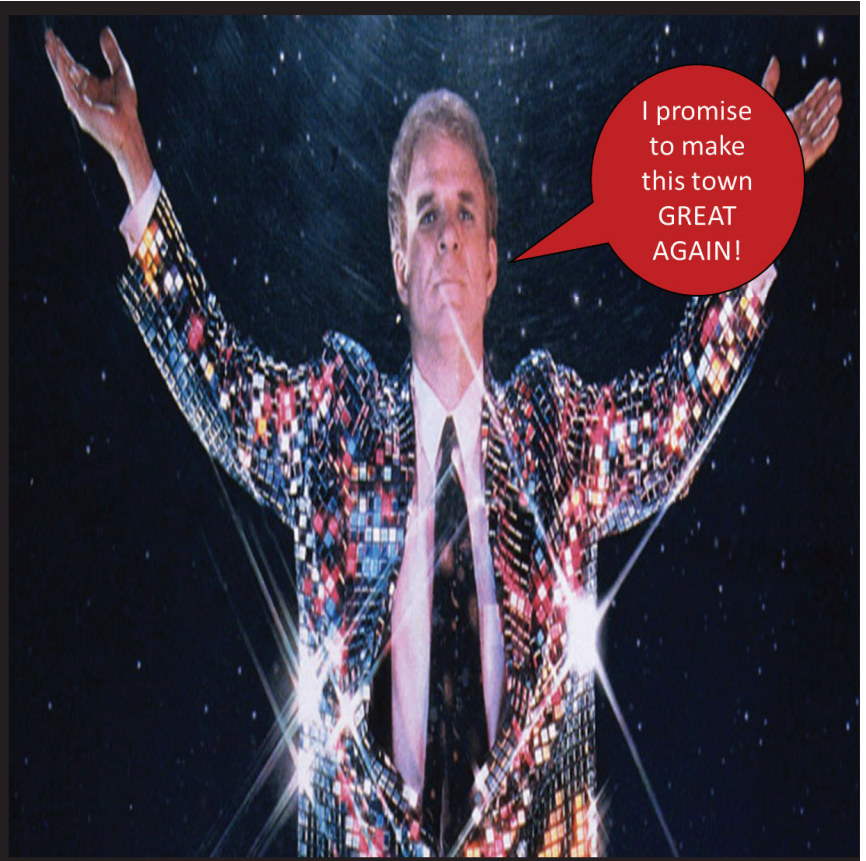


If your LG provides safe, sustainable, secure services in a predictable, cost-effective manner...

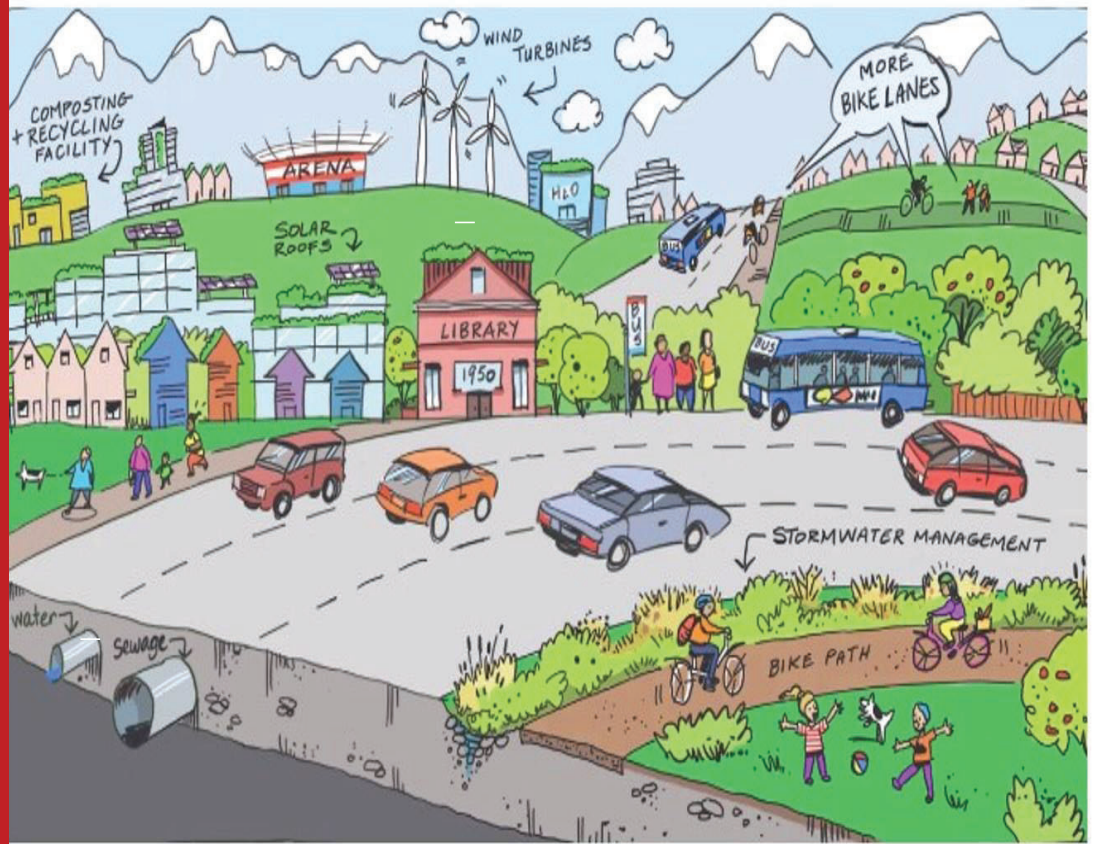
...then the quality of your services is directly linked to keeping infrastructure assets in state of good repair.

Why do we need Elected Officials?

(How do we make ourselves relevant?)



Stewardship
and oversight
(not insight)
over the
organization
that provides
those services.



What was I elected to do?



NOTHING
You were
elected TO
THINK

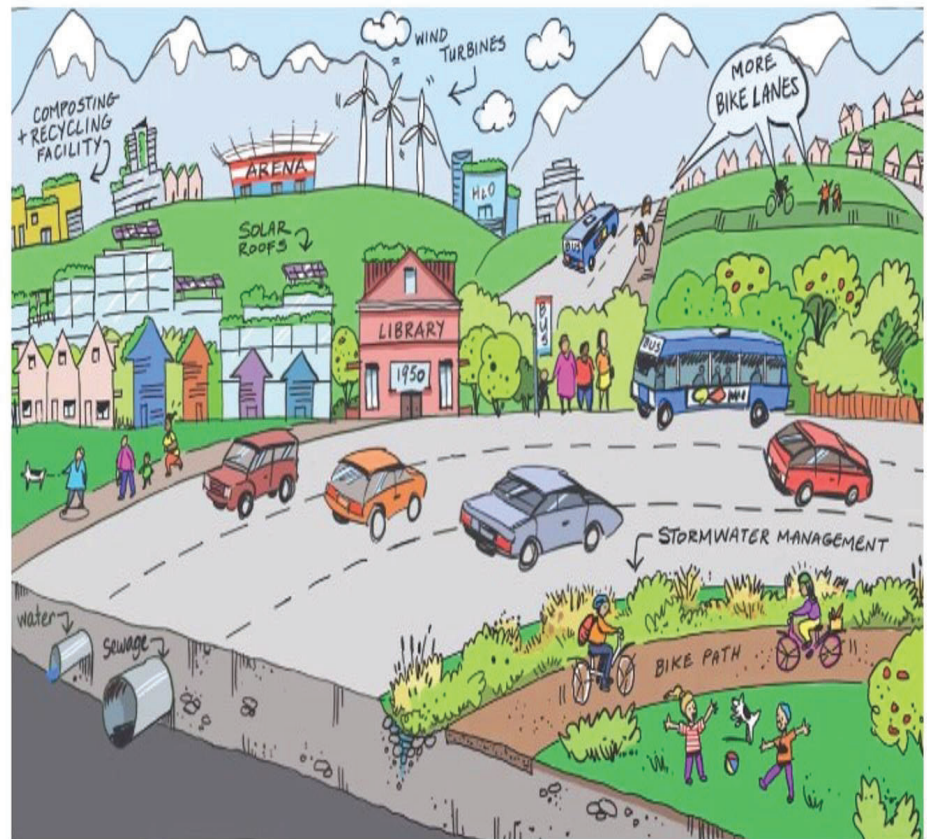
2

?

1

What services
does your
community need
and want now
and in the future?

(and at what level)



2

What are the services your community is able to fund?



1

What services does our community want and need now and in the future?

(and at what level)

2

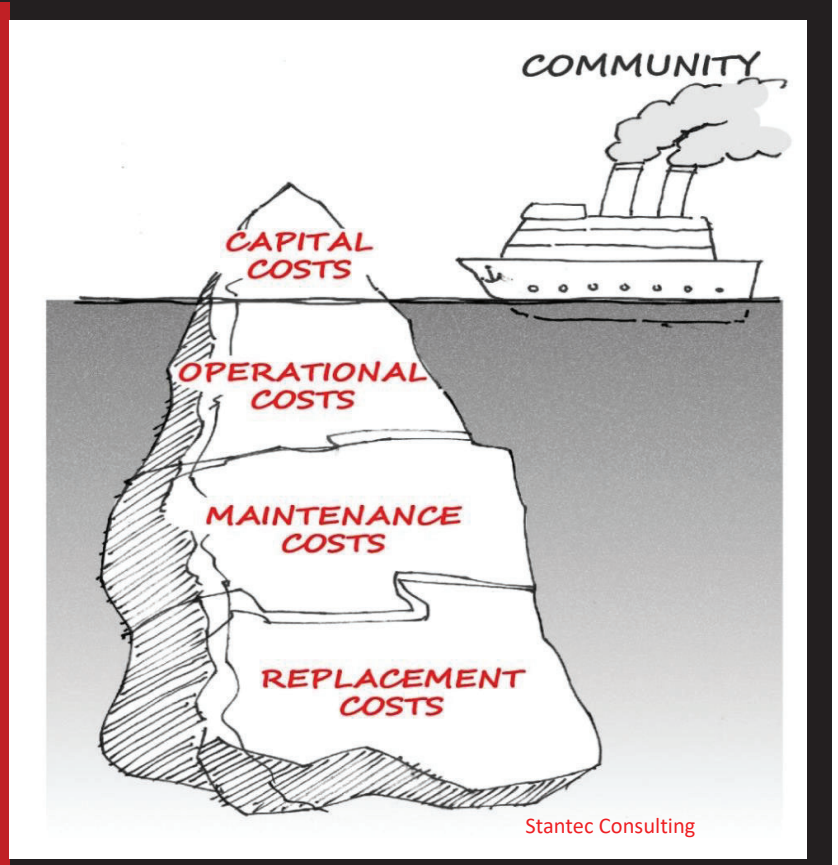
What are the services our community is willing and able to fund?

3

What are we spending to maintain our services? Is it enough? What should we be spending?

Where are we vulnerable?

Can we prove we are sustainable?



What is Asset Management?



Asset Management starts with...

What services do we provide and WHY?

What level of service do we provide?

What does it cost to provide this level of service?

Is this service level:

Sustainable?

Fully funded?

Needed, desired?

How do we achieve sustainability? AM Mindset

- What do we own?
- Where is it?
- What is it worth?



- What condition is it in?
- What do we need to do to it and when?
- How much money do we need?

- What are the risks and consequences?
- Where are we vulnerable?

- Do we still need it?
- What do regulators require?
- What are public's expectations?

Asset Management:

Logical
Rational
Data Driven
Strategic
Pragmatic

You wouldn't like me
when I'm angry...

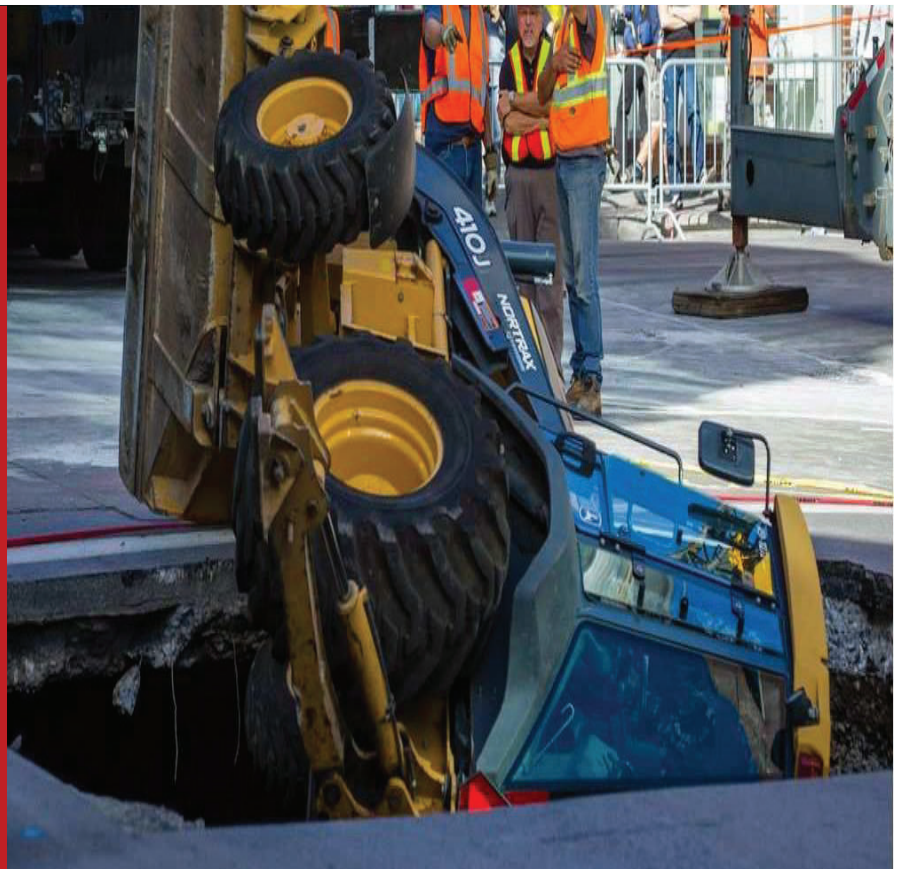
Because I always back up
my rage with facts and
documented sources.

-The Credible Hulk



Sooooooooo
what is the
problem?

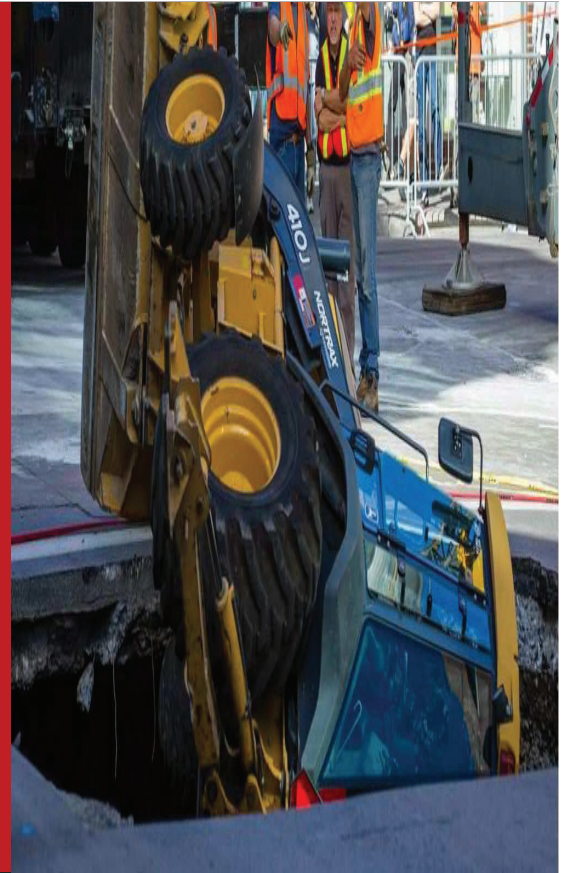
How did this
happen?



What could possibly get in the way of evidence-based decision making?

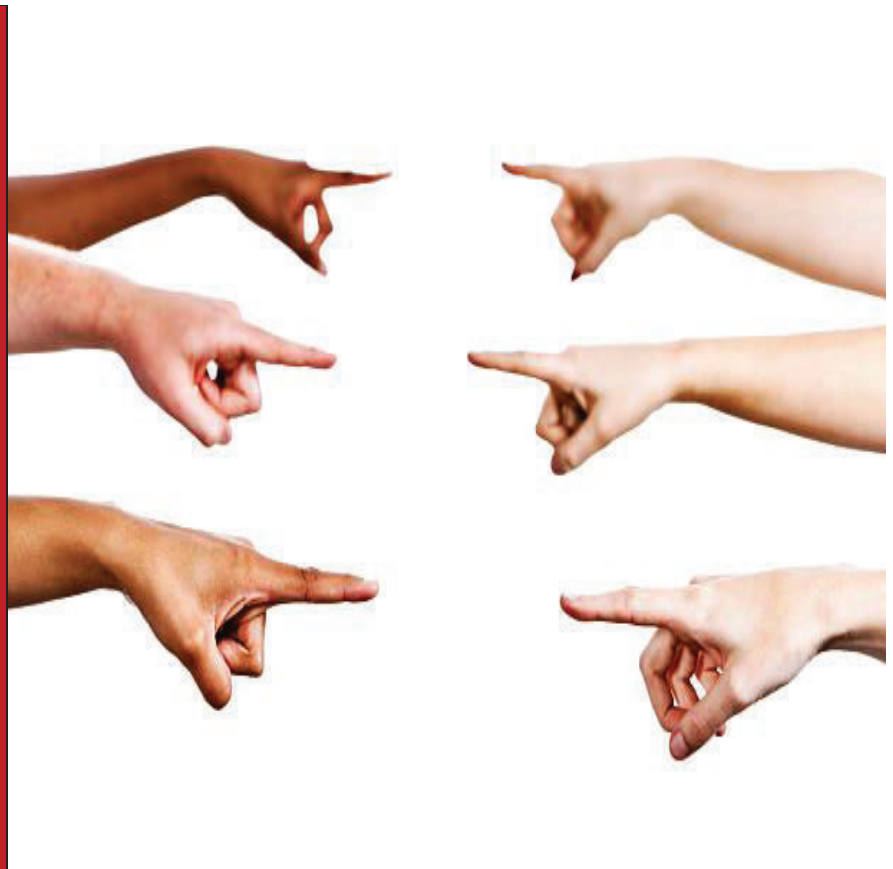
Why do we ignore the things we should not ignore?

Why do we not attend to the things we should attend to?



CULTURE:

- SHAME
- BLAME
- FINGER POINTING
'OTHERING'



Overwhelm



FEAR OF GETTING IT
WRONG



LACK OF TRUST



IT IS UNSAFE TO
TELL THE TRUTH



COGNITIVE
DISSONANCE



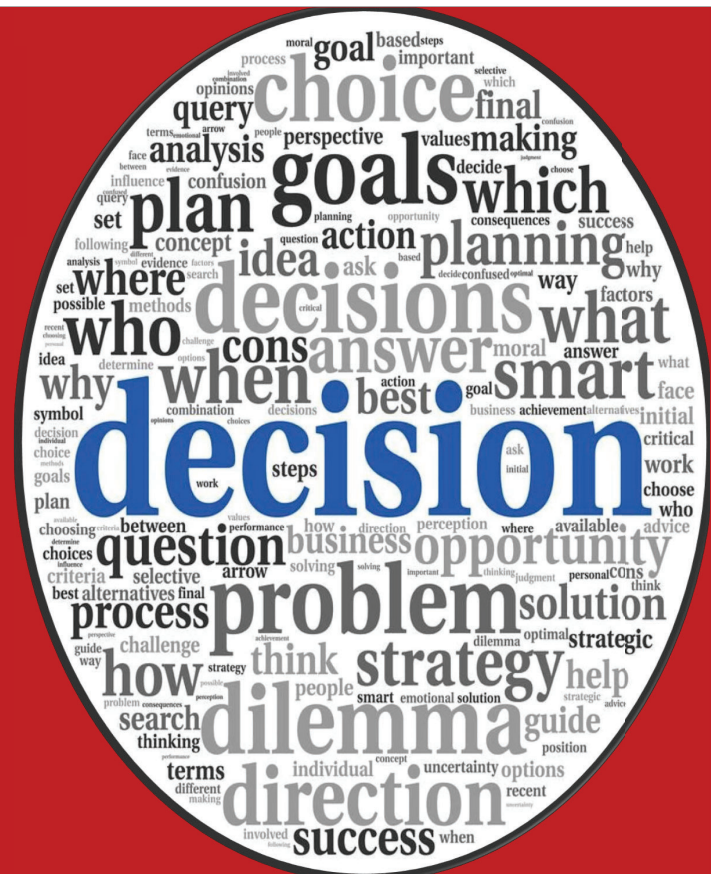
FEAR OF OTHERS



RIGHT INFORMATION



RIGHT ETHOS –
CULTURE - MINDSET



AN ASSET
MANAGEMENT
MINDSET:

NOT 'US' AND
'THEM'



STAFF'S ROLE:
YOU ARE THE VOICE OF
THE ASSET

COUNCIL'S ROLE:
YOU ARE THE VOICE
OF COMMUNITY
NEEDS AND DESIRES

AN ASSET
MANAGEMENT
MINDSET:

PARTNERSHIP



AN ASSET
MANAGEMENT
MINDSET:
ITERATIVE

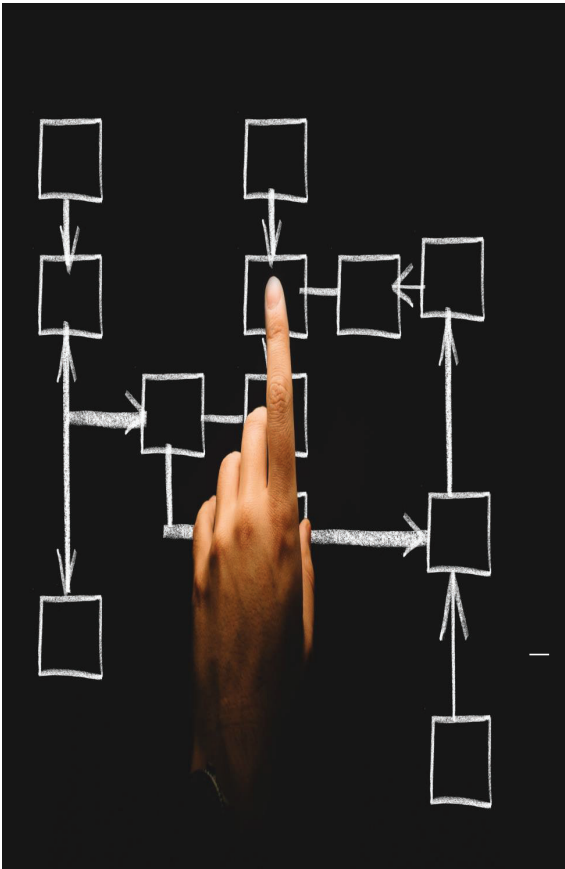
I exercised once, but found I was allergic to it. My skin flushed and my heart raced. I got sweaty and short of breath. Very dangerous.



AN ASSET
MANAGEMENT
MINDSET:
NEEDS CHAMPIONS
(BRAGGERS)



BUILDING AN ASSET MANAGEMENT CULTURE IS ABOUT SEVENTH GENERATIONAL THINKING



PROGRESS CHECKLIST

- Have you engaged your community to determine service level expectations?
- Do you have the required financial resources to meet them?
- Do you know the total cost of providing existing services at the current service levels?
- Does your municipality have an AM Policy that includes a governance structure with clear roles and responsibilities for staff?
- Does your staff have the required resources and expertise to develop a sound AM plan that meet regulatory requirements?
- How reliable is your assets data on costs, risks and service levels?
- What is the appropriate infrastructure deficit or funding gap for our community? How will it impact service levels, now and into the future?

Thank you

Live and lead so
you don't have
to apologize to
the future!



How brave are you?

Early in the season
Just about budget time
Council wants no tax increase
Staff starting to lose their mind

'Cause the infrastructure gap is
growing
We got no policy
We deferred our maintenance
Be reactive is our strategy

**Down on the Corner
Under the street
Water main's about
to blow
Bring a nickel, tap
your feet**

Buried under piles of data
None of it makes sense
Do we need the experts
To help clean up the mess

Inventory and condition
What's their life expectancy
We need more information
To know what the cost will be

**Down on the Corner
Under the street
Sewer main's about
to blow
Bring a nickel, tap
your feet**

How do we tell the public
That things are really bad
It's gonna cost some money
And you know they will be mad

We have to tell the truth
Communication is the key
For future generations
What is our destiny
Is it gonna be.....

**Down on the Corner
Under the street
Water main's about to
blow
Bring a nickel, tap your
feet**

<https://youtu.be/O2OmAKfD5gw>

I know ya think its boring
But the numbers are soaring
The deficit ain't going away

You think your getting hosed
'cause you still drive on the
roads
You're gonna have to fix 'em
someday

**Take'n care of business
Everyday
Take'n care of business
Everyway
Take'n care of business
It's alright
Take'n care of business
It won't happen
overnight **COME ON****

Can't just defer
And only do what you prefer
The sewer needs to handle the
flush

Your kids will be annoyed
If the water's null and void
They'll wonder why you didn't
rush

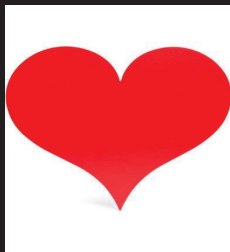
**Take'n care of business
Everyday
Take'n care of business
Everyway
Take'n care of business
It's alright
Take'n care of business
It won't happen
overnight **COME ON****

Better start behaving
'cause the climate is changing
Don't bury your head in the
sand

If the water lines are breaking
If ya think that staff is faking
Better listen to this song again
and again...

Take'n care of business
Everyday
Take'n care of business
Everyway
Take'n care of business
It's alright
Take'n care of business
It won't happen
overnight **COME ON**

Asset Management



DESIGN the future you want:
Safe
Sustainable
Secure

